

*Together Under One Roof*



**AFG Steel Construction**

CORPORATE PROFILE

# About Us



Established in 2007 as a subsidiary of Kibar Group, AFG Steel and Construction operates in all areas of the construction industry.

Kibar Group has operations in metals, automotive, packaging, building materials, energy, and service industries with more than 20 Group companies and is ranked among the leading group of companies in Türkiye.

With its good reputation, brand image, strong partnerships as well as extensive knowledge and decades of experience about Turkish markets, the Group has become a prominent force contributing to the development of the economy.

With its various companies in different sectors, Kibar Holding is individually listed in Türkiye's Top 500 Industrial Enterprises list published every year.

We are a technology-driven engineering company with core activities in project development, management, design and construction. Our projects include industrial facilities, power plants, data centers, healthcare facilities, Modular Buildings, Cold Chain and Solar Solutions. AFG targets activity in Europe, Central Asia, the Middle East, and Russia and Sub-Saharan Africa. AFG Steel and Construction is diverse and flexibility capabilities arise from a talented team of experienced and young engineers using leading edge technology for tailor made designs in support of a project's needs and goals. AFG Steel and Construction believes its greatest asset is its employees.



# Kibar Holding

Kibar Holding has been one of the leading business groups in Türkiye since 1972, when it started its operations. Kibar Holding has been making significant contributions to the national economy and social welfare since its establishment.

As of the end of 2023, Kibar Group continues its activities with more than 20 companies and more than 5,000 employees in the metal, automotive, packaging, building materials, real estate, logistics, energy and service sectors.

Kibar Group's international business partners include Posco,

Seoyon E-Hwa and Heritage, the world's leading brands in their respective fields. Kibar Holding and group companies make significant contributions to the Turkish economy with their high production capacity, employment, export activities and social investments.





## Vision

AFG aims to create added value for its clients and to grow with its employees by providing products and services in compliance with international quality standards. AFG's main objective is to be reliable and well-regarded by its clients, partners, suppliers, and its country, and to become one of the world's leading firms in the steel structures sector through its successful business practices. "AFG's mission is to manufacture and construct steel structures which are in compliance with International standards, sustainable, environmentally friendly, high-quality and distinctive.



## Mission

AFG undertakes this mission by focusing on its scope of activities and by building on its values and know-how to create a dynamic and innovative company culture with the support of its employees.





## Who are we?

Our customers are not just important, but also the hub of our importance, and they are our partners. We do not just provide solutions for our customers, but also develop and improve solutions.

We manage all the processes in the project on behalf of our customers, coordinate the entire design, supply, and construction work and submit the project on time, meeting the expected quality and cost requirements. We help our customers save time and money, reduce risk and increase efficiency thanks to our superior experience. Your entire project is guaranteed by our team of AFG Steel and Construction specialists thanks to our EPCM expertise that covers turnkey project solutions and strong engineering, supply and installation services.



### Trust

We behave in a way that ensures trust in ourselves and our organization, regardless of the circumstances.



### Righteousness

We value and respect people; we treat them equally. We objectively get other people's opinions even if they do not fit ours; we try to choose the right one.



### Diligence

We are aware of our responsibilities. We work productively and devotedly to reach success.



### Flexibility

We adapt to change and innovations. We motivate people around us to adapt to change and innovations too.



### Innovation

We determine innovative, creative and pioneering approaches that can create value. We inspire others to employ this approach.

## All of your projects are guaranteed by AFG Steel and Construction.

We warrantie optimal system efficiency through sustainable high-quality, planning, and time commitments. Maintenance and operation being part of our agreement, we warrantie that your systems operate smoothly during their operating life. We can offer long-term product and system performance warranties in your solar energy investments thanks to our comprehensive and sensitive quality control assurances and superior EPC competence.



We commit to create an efficient quality management system, put it into practice and constantly update it so that we can sustain quality in our products and services, ensure business efficiency, do our job properly, submit the projects within the expected budget and performance, and meet the needs and expectations of our customers, employees, and shareholders.





# Building Envelope Solutions

Planning and construction of a new manufacturing plant or renovation of current plants require a wide variety of knowledge, experience, and reliable expertise.

We provide a wide range of services covering engineering, planning, supply, logistics, construction, and installation processes required for ideal planning and design of the system as well as completion and commissioning of the system in due time to be delivered to the investor on time to ensure maximum performance with optimal costs by our specialized engineering and technical staff whose efficiency and competence are proven with experience over the years.



# Controlled Environment Solutions

Compared to other cold storage rooms, CoolCell offers integrated solutions with its unique energy efficiency and a high-volume storage space, easy installation without requirement for steel construction, ensuring hygienic and safe storage of vaccines, blood, medicinal products, all kinds of frozen dry food, fruits and vegetables as well as meat and seafood products.

Compared to other cold storage rooms, CoolCell offers integrated solutions with its unique energy efficiency and a high-volume storage space, easy installation without requirement for steel construction, ensuring hygienic and safe storage of vaccines, blood, medicinal products, all kinds of frozen dry food, fruits and vegetables as well as meat and seafood products.





# Rooftop Solar System Applications

We offer modern and sustainable energy solutions through rooftop solar system applications and solar capped panels. Rooftop solar energy systems offer you an ideal method to produce the electricity that your companies and production facilities internally need and reduce your costs. A significant part of the energy needed by factories can be produced by rooftop solar energy systems and used for self-consumption. Plus, there is no need for an energy storage battery. We can develop solar energy system panels for all types of roofs thanks to the different solutions developed by our specialised engineers.





# Structural Steel Solutions

Structural Steel Solutions offers residential, commercial, agricultural, industrial construction along with customized interior and exterior services. With our team of professionals, we can handle all your construction needs and complete your project on time and within budget.

Offering optimum construction solutions meeting the customer requirements from industrial buildings to commercial buildings, and from facilities including schools, hospitals, sports facilities and cultural centers to logistics storehouses and hangars, AFG creates flawless solutions with its years of experience in project, manufacturing and delivery processes, and its team of experts.

Utilization of steel has proven to be more sustainable.



# Building Solutions

We provide you with prefabricated housing concepts to make sure that you can have your dream house with minimal efforts. With a wide variety of innovative and modern prefabricated building models featuring various specifications, we provide custom solutions for everyone, envisioning design, comfort, and functionality as an integral part of our buildings, because everyone deserves to live wherever and however they dream to live.

Grade 1 earthquake resistant prefabricated buildings. Flexible and lightweight buildings. They just shake a little but they are not demolished even in case of the most powerful earthquakes. Installation time of modular buildings are shorter compared to reinforced concrete buildings. In addition, prefabricated houses can be demounted and mounted many times. Manufactured in line with any kind of climatic conditions with thermal and static calculations. As the entire load-bearing system is manufactured from high-density galvanized steel, they are stainless and resistant to deformation, you can safely use your modular buildings for many years to come.





# References

## Building Envelope Solutions



### BMW Technology Energy Module Building

Roof trapezoidal sheet and facade sandwich panel installation works of the Technology Energy Module Building within BMW's Electric Vehicle Production Facility complex established in Debrecen / Hungary.

Area: 154,500 m<sup>2</sup>

Location: Debrecen / Hungary





# References

## Building Envelope Solutions



Türkiye's Automobile Enterprise Group TOGG, which draws attention as one of the largest investments in the region in Bursa / Gemlik, became a total solution partner for the factory that will be operational in 2022.

The factory of TOGG, the enterprise that will carry Türkiye forward in the automobile industry, where 100 thousand square meters of roof and 80 thousand square meters of facade work was carried out by AFG Steel and Construction has become safer, more sustainable and more energy efficient with Assan Panel's facade and insulation panels.

Providing the necessary water and heat insulation on roofs with a minimum slope of 1.5 percent, N5TM roof panel stands out as the roofing material with high fire resistance. It enables us get much faster, easier and economical montage opportunity as compared to on-site application. In N5T Membrane Roof Panel, the membrane adheres to the metal, not directly to a backfill material. The panel,

which has a high compression strength, prevents deformation, marks and folds that may occur on the membrane surface, providing visual advantages and increasing the carrying capacity. The panel is available with PVC or TPO membrane options.

**Area:** 180,000 m<sup>2</sup>

**Location:** Bursa / Türkiye



# References

## Building Envelope Solutions

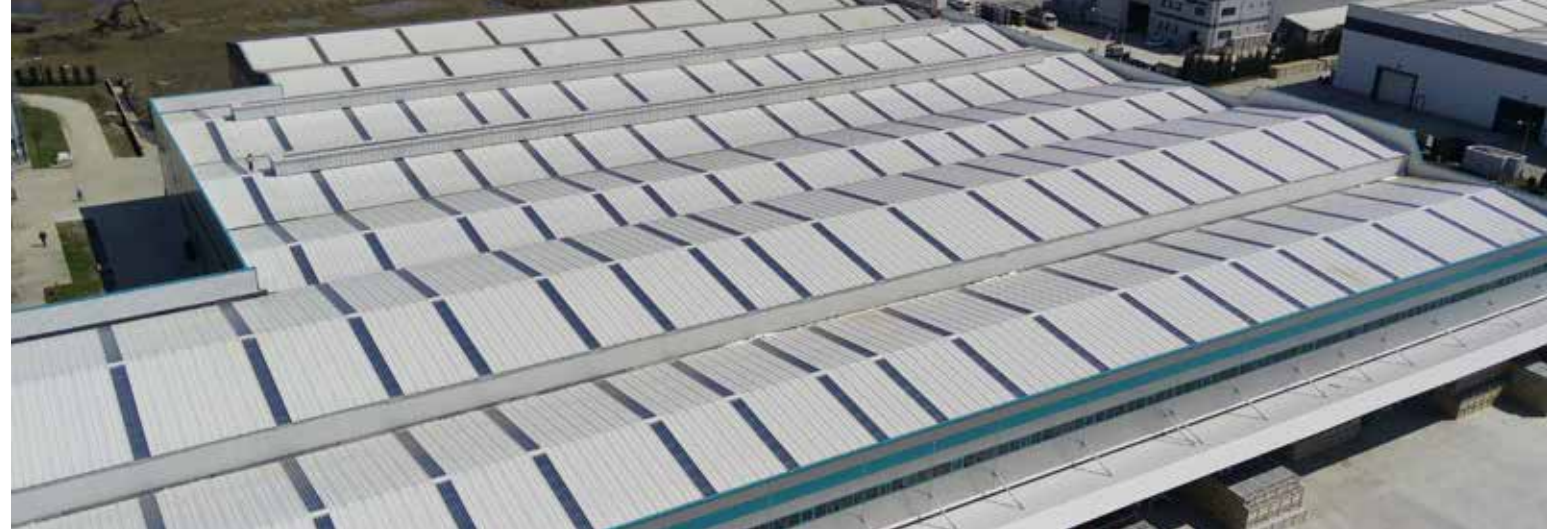


AFG Steel and Construction which carries out its large-scale construction and building projects has become the solution partner for AKPA's Aluminum Painting Facility, which has been successfully operating in the aluminum industry for 35 years.

The first and only real Solar Capped Sandwich Panel and Polyurethane W facade panel from Assan Panel productions were used in the Painting Facility with the 35 thousand tons manufacturing capacity, constructed by AKPA. In this project, 14 thousand square meters of roof and 4 thousand square meters of facade work were carried out with Assan Panel's products. AKPA, which stands out with its large-scale investments and sustainability vision, made its new paint facility investment with a capacity of 35 thousand tons safer, more sustainable and more energy efficient with Assan Panel facade and insulation panels.

Area: 18,000 m<sup>2</sup>

Location: Hendek / Sakarya





# References

## Building Envelope Solutions



It is the roof renovation project of Çalık Alexandria for Ready Made Garments PFZ, one of the Çalık Holding group companies, of the textile factory investment in Alexandria / Egypt. Within the scope of the project, the renovation of approximately 17,500 m<sup>2</sup> roofing system, which is exposed to the chemical effects of time and process, is carried out. The roof system applied on-site with the bottom-top sheet and the insulation layer placed between it is removed, the existing carrier steels are improved and other necessary infrastructure works are completed and a new sandwich panel roof coating is installed.

**Area:** 17,500 m<sup>2</sup>

**Location:** Alexandria / Egypt





# References

## Building Envelope Solutions



Adöksan Döküm San. ve Tic. Ltd. Şti.'s new investment project in Miskolc / Hungary. The 5,000 m<sup>2</sup> first phase of the project, which includes a total of 13,000 m<sup>2</sup> roof and facade panels, is implemented by AFG as an EPCM project. Within the scope of the project, the installation of roof & facade panels and accessories, facade skylights, siphonic drainage systems and the coordination of smoke extract systems and industrial doors were undertaken by AFG Steel and Construction.

Area: 13,000 m<sup>2</sup>

Location: Miskolc / Hungary



# References

## Building Envelope Solutions

### Akli Film Platosu

AFG Steel and Construction has completed 2,500 m<sup>2</sup> of roof panel cladding and 3,000 m<sup>2</sup> of facade panel cladding for the Akli Film Platosu.

Area: 5,500 m<sup>2</sup>

Location: Gebze / Kocaeli



### The Development Corner

In this project, 10,500 m<sup>2</sup> of roof and 6,500 m<sup>2</sup> of facade panel work was implemented by AFG Steel and Construction.

Area: 17,000 m<sup>2</sup>

Location: İzmit / Kocaeli





# References

## Building Envelope Solutions

### Plant Factory Bitki ve Gıda Sistemleri A.Ş.

AFG Steel and Construction realized the facade and wall panel cladding of Plant Factory Bitki ve Gıda Sistemleri A.Ş. In this project, 1,200 m<sup>2</sup> of roof panels and 1,150 m<sup>2</sup> of facade panels were applied.

Area: 2,250 m<sup>2</sup>

Location: Sarıyer / İstanbul





# References

## Building Envelope Solutions



### İspak Ambalaj

AFG completed all cladding works for Assan Yapı, the contractor of İspak Ambalaj company located in İzmit Kocaeli on the New Lacquering Production Facility.

Area: 5,200 m<sup>2</sup>

Location: İzmit / Kocaeli



# References

## Building Envelope Solutions

### Polgar Synergy Precast

In Polgar Synergy Precast Factory Project, 12,400 m<sup>2</sup> roof corrugated sheets installation and 7,200 m<sup>2</sup> mineral wool filled wall panel installation were made.

Area: 19,600 m<sup>2</sup>

Location: Polgar / Hungary





# References

## Building Envelope Solutions



### Nestlé Purina

In Nestlé Purina Project, 14.000 m<sup>2</sup> roof corrugated sheets installation and 5.000 m<sup>2</sup> roof membrane insulation (steam cutter + mineral wool + membrane) were made.

Area: 19,000 m<sup>2</sup>

Location: Bük / Hungary





# References

## Building Envelope Solutions

# SAMSUNG

### Samsung WHP

In the Samsung WHP Project, 4,000 m<sup>2</sup> of indoor sandwich panels were installed.

Area: 4,000 m<sup>2</sup>

Location: Nyiregyhaza / Hungary



# References

## Building Envelope Solutions

### Orhanlı Logistics Warehouse

In this project realized by AFG Steel and Construction, 23,500 m<sup>2</sup> roof panel application and 10,000 m<sup>2</sup> facade panel application were made.

Area: 33,500 m<sup>2</sup>

Location: Orhanlı / İstanbul





# References

## Building Solutions (Turnkey)

### Serabiz Tarım Anonim Şirketi

AFG Steel and Construction realized structural steel installation roof panel cladding on an area of 3,500 m<sup>2</sup> and facade cladding on an area of 2,600 m<sup>2</sup> in the Mucur / Kırşehir factory of Serabiz Tarım Anonim Şirketi.

Area: 6,100 m<sup>2</sup>

Location: Mucur / Kırşehir



# References

## Building Solutions (Turnkey)

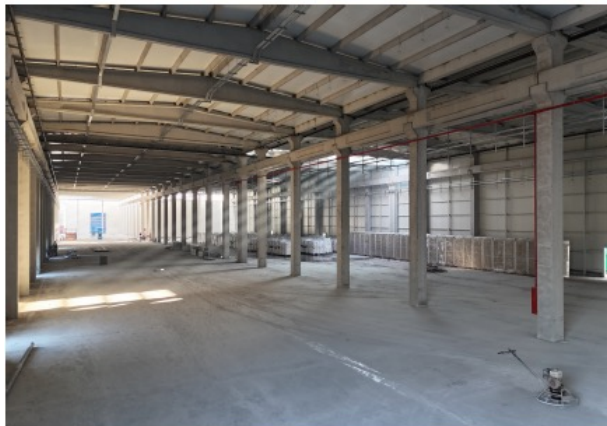


### Assan Panel

The construction of the Assan Panel Production Facility with a closed area of 9.500 m<sup>2</sup> located in Balıkesir, contracted as turnkey. Project including electrical - mechanical - civil and landscaping works, provisional hand over completed in time and budget.

Area: 9,500 m<sup>2</sup>

Location: Balıkesir





# References

## Building Solutions (Turnkey)

### KCG

The roof renovation works of the Textile Fabric Production Facility, which is an investment of Küçük Çalık Tekstil company with a closed area of 5,500 m<sup>2</sup> located in Cairo, Egypt, contracted as a turnkey lump sum project. Provisional handover of the project was made in time and budget constraints.

Area: 5,200 m<sup>2</sup>

Location: Cairo / Egypt



# References

## Controlled Environment Solutions

### **SUNTAT - HMK Immobilien**

The supply and installation of cold rooms / industrial cooling groups within the Storage Facility belonging to SUNTAT company located in Mannheim, Germany has been agreed as turnkey.

Area: 30,000 m<sup>2</sup>

Location: Mannheim / Germany





# References

## Rooftop Solar System Solutions



### Posco Assan TST

Capacity: 102.30 kWp

Inverter: 1 x 100 kWe

Solar Panel: 186 x 550 W

Commisioning: 2023

In the power plant established for self consumption, mainly the east-west infrastructure was used.



# References

## Rooftop Solar System Solutions



### **Assan Panel**

Capacity: 646,80 kWp

Inverter: 6 x 100 kW<sub>e</sub>

Solar Panel: 1176 x 550 W

Commissioning: 2024

In the power plant established for self-consumption, a long profile infrastructure system on sandwich panels is used.

In the project designed using Optimiser technology, 24/7 power plant monitoring is provided.





*Together Under One Roof*



**AFG Steel Construction**

CORPORATE PROFILE

HUNGARY

AFG Steel Construction and Chemistry Kft.  
1139 Budapest, Váci út 99, Balance Hall, 3rd floor

TÜRKİYE

Yayla Mah. D-100 Karayolu Üzeri, Rüya Sok. No: 2 34940 Assan Tesisleri  
+90 (850) 202 32 20 +90 (216) 446 38 55  
[www.assanafg.com](http://www.assanafg.com) [info@assanafg.com](mailto:info@assanafg.com)

